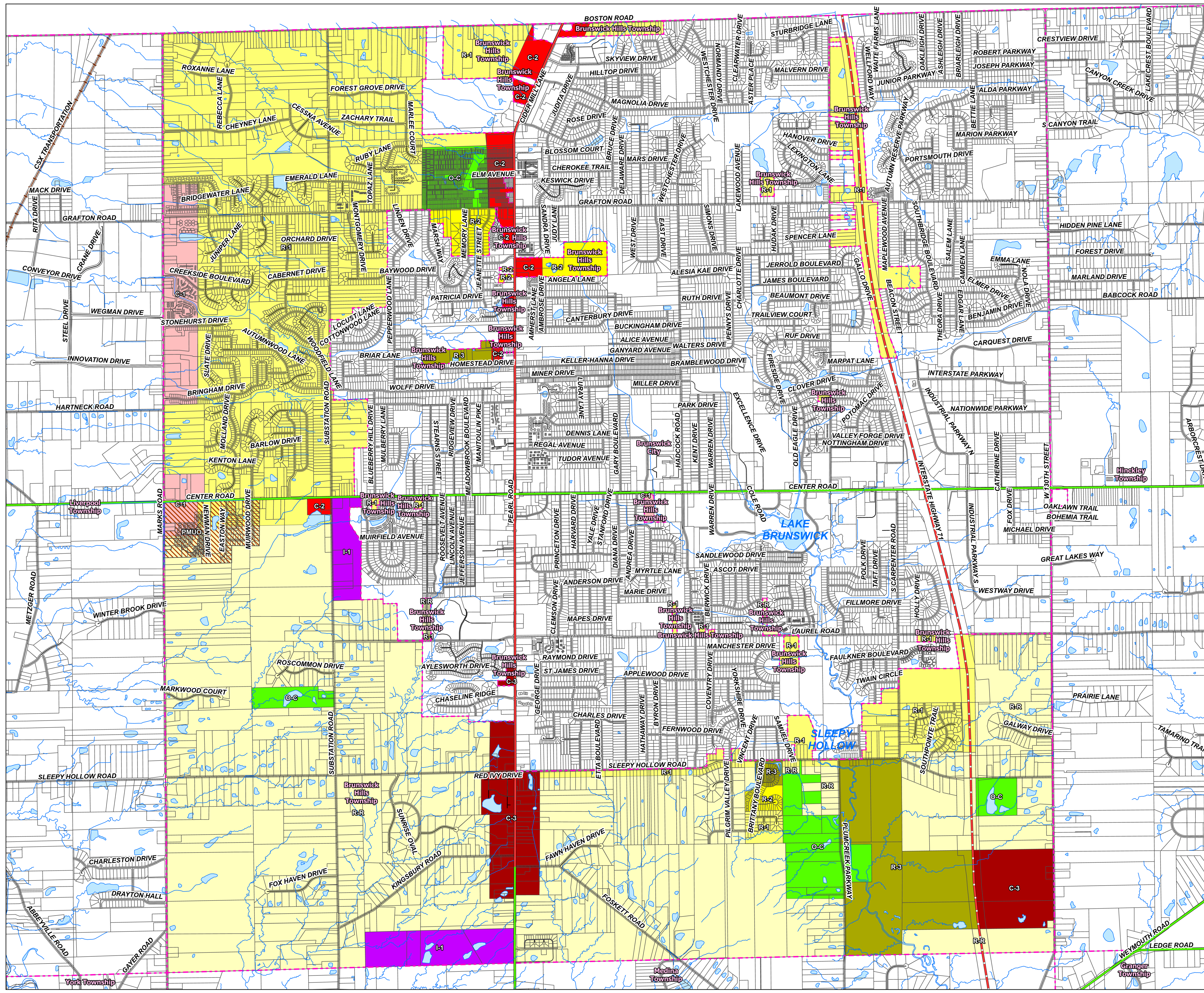


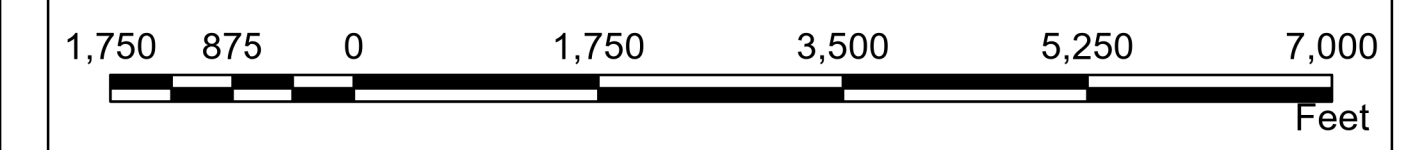
# Zoning Districts



- Interstate Highway
- Federal Highway
- State Route
- Railroad
- Streams
- Lakes
- Jurisdiction Boundary
- Parcels
- R-R Rural Residential
- R-1 Residential
- R-2 Residential
- R-3 Residential
- C-1 Local Commercial and Multifamily
- C-2 Community Commercial
- C-3 Highway Arterial Commercial
- I-1 Industrial
- O-C Open Space Conservation
- PMUO Planned Mixed Use Overlay



1 inch = 1,375 ft



The road centerline, rail centerline, parcel boundary, hydrology, and jurisdictional boundary data is maintained by the Medina County Highway Engineers Office. This is informational data and does not substitute a survey-instrument of record by a surveyor.

The Brunswick Hills Township zoning district data is maintained by the Medina County Department of Planning Services in cooperation with the Brunswick Hills Township Zoning Commission, Trustees, and the Zoning Office. Please contact Brunswick Hills Township Zoning.

"Enrichment Through Diversity"



Visit us on the web at <https://www.medinaco.org/planning/>

Last Edited 02/24/2026 Edited By: J. Kassouf

R:\arcview\zoning\layette\02\brunswick\_hills\_zoning\_22x34\_02232026\brunswick\_hills\_zoning\_22x34\_02232026.aprx